

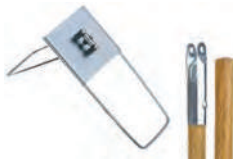
Cotton Industrial Slip-On Cut-End Dust Mop - Treated



The cotton yarn of this dust mop is heat-set to prevent fraying. The poly backing features a double boot construction to prolong the life of the mop. Slip-on style fits 5" collapsible frames. Pre-treated with Velva Sheen dust control treatment which traps fine dust so it can be easily shaken from the mop.

Catalog ID	Size
ATL127	18"
ATL127	24"
ATL127	36"
ATL127	48"
ATL145	60"(TIE-ON)

Breakaway Dust Mop Frame and Handle



Breakaway Dust Mop Frame and Handle Frame collapses for use with slip on or tie on dust mops. Rugged industrial frame and handle are built to last. 360-degree swivel with exclusive roll-pin provides maximum maneuverability around and under furniture.

Catalog ID	Size
ATL126	18"
ATL126	24"
ATL126	36"
ATL126	48"
ATL146	60"

Industrial Floor Squeegee



Industrial Floor Squeegee Rust-resistant, lightweight, one-piece aluminum channel. Stainless steel self-tapping screws hold the blade firmly in place. Used in the industrial trade on rough floor surfaces with large amounts of water. Thick industrial-grade rubber, recommended handles - 54" or 60" tapered wooden.

Catalog ID	Size
ATL360	18"
ATL360	24"
ATL360	30"
ATL360	36"

Dust Pans



Built for heavy-duty industrial sweeping applications, indoors and out. Strong 1-1/8" handle is designed to provide a durable yet comfortable grip.

Catalog ID	Size
ATL180	12" Metal
ATL181	12" Plastic

Hair/Fibre Blend Counter Brush



The hair/fibre blend counter brush is filled with horse hair and synthetic fibres which allow this brush to sweep up the finest dust. Useful for sweeping fine dust and dirt particles from counters and benches.

Catalog ID	Description
ATL84	Counter Brush
ATL17522	Corn Whisk Broom

Cotton Wide Band Wet Mop



Cotton Wide Band Mop - 350 g Cotton industrial wide band wet mop for general purpose cleaning. Manufactured with high grade cotton yarn is absorbent and durable with excellent floor drying qualities

Catalog ID	Size
ATL4516	
ATL4524	

Handles



The cotton yarn of this dust mop is heat-set to prevent fraying. The poly backing features a double boot construction to prolong the life of the mop. Slip-on style fits 5" collapsible frames. Pre-treated with Velva Sheen dust control treatment which traps fine dust so it can be easily shaken from the mop.

Catalog ID	Size	Description
ATL52512	1 1/8" X 60"	Wood / Metal threaded end
ATL52506	1 1/8" X 54"	Wood / Tapered end
ATL2501	15/16" X 48"	Metal
ATL12600	60"	Dust Mop Handle
ATL1560		Wood Mop handle w/Jaw Clamp
ATL8801		Fiberglass Mop handle w/Jaw Clamp
ATL2408	48"	Aluminum / Nylon Threaded end
ATL2533		Push Broom Brace

Synthetic Combo Coarse Sweep Push Broom



The 67 Series features a centre filled with coarse synthetic bristles encased by a row of soft, flagged, synthetic bristles for a broom that will sweep up fine dust and move debris at the same time.

Catalog ID Size

ATL67	18"
ATL67	24"
ATL67	36"

Tampico Blend-Medium Sweep Push Broom



A combination of synthetic tampico fibres makes this broom a good choice for a warehouse or any facility where both fine dust and larger particles need to be moved.

Catalog ID Size

ATL560	18"
ATL560	24"
ATL560	36"

Synthetic Fibre Fine Sweep Push Broom



A fine fibre push broom with soft, synthetic fibres. Flagged ends pick up dust with an almost magnetic action, making this broom a good choice for hardwood floors. The fill is moisture, solvent and oil resistant with excellent memory, so bristles will retain their shape over time.

Catalog ID Size

ATL581	18"
ATL581	24"
ATL581	36"

Synthetic Fibre Coarse Sweep Push Broom



This stiff sweep synthetic broom is ideal for snow, gravel, or mud in wet or dry conditions. The fibre is oil and solvent resistant.

Catalog ID Size

ATL83	18"
ATL83	24"
ATL83	36"

Synthetic Fibre Street/Stable Broom X-Coarse Sweep



This synthetic fibre street broom is used for extremely heavy debris or where the surface is very rough like in street cleaning or construction applications. Synthetic fibres are chemical and water resistant

Catalog ID Size

ATL74	14"
ATL74	18"

Corn Brooms

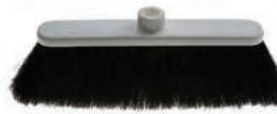


Built for heavy-duty industrial sweeping applications, indoors and out. Strong 1-1/8" handle is designed to provide a durable yet comfortable grip.

Catalog ID Size

ATL761-H/DUTY	
ATL762-XH/DUTY	

Sweep-Ezy Upright Broom Head



These sturdy plastic block uprights are filled with soft synthetic fibres suitable for the smoothest hardwood floors. Traditionally, these brooms have been called "magnetic," referring to the static charge they build up as they work across the surface to remove dust.

Catalog ID Size

ATL784	
--------	--

Warehouse Upright Broom Head



The Warehouse Upright Broom is designed for general purpose sweeping of dirt and debris found in corners and around equipment. The Warehouse is filled with coarse synthetic fibres that are fused into the block reducing the chances of fibres falling out. Synthetic block and fibres are water and chemical resistant

Catalog ID Size

ATL771	
--------	--

Garbage Bag Light/Utility



Catalog ID	Size	Colour	Qty.
ROTPK2022LB	20x22	Black	500
ROTPK2224LB	22x24	Black	500
ROTPK2022LW	20x22	White	500
ROTPK2224LW	20x22	White	500

Garbage Bag X-Strong



Catalog ID	Size	Colour	Qty.
ROTPK2636XSB	26x36	Black	100
ROTPK3038XSB	30x38	Black	100
ROTPK3550XSB	35x50	Black	100
ROTPK4248XSB	42x48	Black	100
ROTPK3550SPC	35x50 XXS	Black	100

Garbage Bag Regular



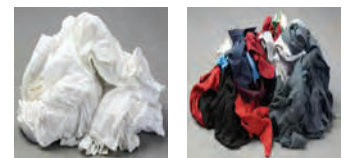
Catalog ID	Size	Colour	Qty.
ROTPK2636RB	26x36	Black	250
ROTPK3038RB	30x38	Black	250
ROTPK3550RB	35x50	Black	250
ROTPK4248RB	42x48	Black	200

Garbage Bag Strong



Catalog ID	Size	Colour	Qty.
ROTPK2636SB	26x36	Black	250
ROTPK3038SB	30x38	Black	200
ROTPK3550SB	35x50	Black	200
ROTPK4248SB	42x48	Black	150

Rags



Catalog ID	Size	Description
RAG1C	20LB	Mixed Cotton. A combination of various cottons & cotton blends. For general purpose wiping/cleaning, lower cost wiper
RAGWG2-B	20LB	#2 White Ganzies. All t-shirt wipers, majority white with color trims. Where a low lint/very absorbent lighter colored wiper is required.
RAGWG1	20LB	#1 White Ganzies. All-white t-shirt wipers. Low-lint/very absorbent, staining, painting, furniture manufacturing.
RAG300	20LB	#300 Fleece. Light & med sweatshirt/fleece material. Heavier material used for industrial wiping applications.
RAG1W	20LB	White Cotton. All white med-heavy weight cotton wipers. Similar to #1 WG but various cottons, mixed weights.
RAGMT		#1 Colored Terri. All terri wipers, various colors. Heavy wiping / great absorbency.

BRUTE® Containers



Rubbermaid

Part#	Diameter	Height	Volume	Lid#	Dome Lid#	Dollie#
2610	15 5/8 in	17 1/8 in	10 gal	2609	—	—
2620	19 1/2 in	22 7/8 in	20 gal	2619-60	—	2643
2632	22 in	27 1/4 in	32 gal	2631	2637-88	2643
2643	24 in	31 1/2 in	44 gal	2645	2647-88	2643
2655	26 1/2 in	33 in	55 gal	—	2657-88	2643

Xtra™ Carts



Rubbermaid

Part#	Length	Width	Height	Capacity
4091	40 5/8 in	20 in	37.8 in	300 lb
4092	40 5/8 in	20 in	37.8 in	300 lb

Tilt Trucks



Rubbermaid

Part#	Length	Width	Height	Capacity	Volume	Lid#
1304	56 3/4 in	28 in	38 5/8 in	450 lb	1/2 yd ³	1307
1305	60 1/2 in	28 in	38 5/8 in	850 lb	1/2 yd ³	1307
1314	72 1/4 in	33 1/2 in	43 3/4 in	850 lb	1 yd ³	1317
1315	72 1/4 in	33 1/2 in	43 3/4 in	1250 lb	1 yd ³	1317
1316	72 1/4 in	33 1/2 in	43 3/4 in	2100 lb	1 yd ³	1317

Insulated Cold Beverage Containers



Rubbermaid

Part#	Length	Width	Height	Capacity
1610	16 in	16 in	20 1/2 in	10 gal
1685	14 3/4 in	12 7/8 in	18 7/8 in	5 gal
1683	12 1/2 in	11 in	16.7 in	3 gal
8257-06	Cup Dispenser			

Platform Trucks



Rubbermaid

Part#	Length	Width	Capacity
4403	36 in	24 in	500 lb
4406	36 in	24 in	1000 lb
4433	48 in	24 in	500 lb
4436	48 in	24 in	1000 lb

WaveBreak® High-Performance Mopping Systems



Rubbermaid

Part#	Length	Width	Height	Capacity	
7580-88	20.1 in	15.7 in	36 1/2 in	35 qt	Side press
7578-88	20.1 in	15.7 in	36 1/2 in	35 qt	Down press

Tork W4 SYSTEM



Tork Advanced Wiper 440, Top Pak; Ply - 4-Ply; Color - Blue; Base Sheet - Paper; Sheet Size (WxL) - 12.8125" x 16.4"
 Wiper Per Package - 90; packages Per Case - 5
 - High quality, unique hole structure provides optimum absorption of oil, grease and cutting fluids. Excellent glass cleaner, no streaks or lint

Catalog ID
 TOR440278A

Tork Premium Specialist Cloth Cleaning



Tork Premium Specialist Cloth Cleaning, Top-Pak; Ply - 1-Ply; Color - White; Base Sheet - Spunlace; Sheet Size (WxL) - 15 x 16.5 (38.10 x 41.91 cm); Wiper Per Package - 150; packages Per Case - 5; Wipers Per Case - 750; System Identifier - W4 System
 - Tork Premium Specialist Cloth Cleaning wiper is made from a non-woven microstructure that provides a high performance for dry-wiping with solvents, especially organic & water based.

Catalog ID
 TOR197168

Tork Premium Multipurpose Cloth 520



Tork Premium Multipurpose Cloth 520, Top-Pak; Ply - 1-Ply; Color - Grey; Base Sheet - Spunlace; Sheet Size (WxL) - 15 x 16.5 (38.10 x 41.91 cm); Wiper Per Package - 140; packages Per Case - 5; Wipers Per Case - 700; System Identifier - W4 System
 - When nothing but the best will do, rely on Tork Premium 520 Multipurpose Cloth, the premier wipers. Rental rag replacement and less expensive

Catalog ID
 TOR520378

Tork Performance Top Holder Wiper Dispenser



Tork Performance Top Holder Wiper Dispenser; Color - Red/Smoke; Dispenser Dimensions - 15.51 x 16.81 x 8.11 (39.40 x 42.70 x 20.60 cm); Dispensers Per Case - 1; System Identifier - W4 System
 - Tork Performance is a new generation of dispensers born to perform. All dispensers are optimised for Tork wipers and when combined they become the perfect performance tools.

Catalog ID
 TOR654028A

Tork Premium 570 Multipurpose Cloth



Tork Premium 570 Multipurpose Cloth, Top-Pak; Ply - 1-Ply; Color - White; Base Sheet - Spunlace; Sheet Size (WxL) - 15.2 x 16.85 (38.61 x 42.80 cm); Wiper Per Package - 75; packages Per Case - 5; Wipers Per Case - 375; System Identifier - W4 System
 - The Tork Premium 570 is well suited for use with solvents, absorbing large amounts of water, oil and grease.

Catalog ID
 TOR570178A

Tork Advanced Wiper 440



Tork Advanced Wiper 440, Centerfeed; Ply - 4-Ply; Color - Blue; Base Sheet - Paper; Sheet Size (WxL) - 10 x 15.75 (25.40 x 40.01 cm); Wipers Per Roll - 190; Rolls Per Case - 4; Wipers Per Case - 760; System Identifier - M2 System
 - High quality, unique hole structure provides optimum absorption of oil, grease and cutting fluids.

Catalog ID
 TOR132451A



JANITORIAL SUPPLIES

Tork Advanced Hand Towel Centerfeed



Tork Advanced Hand Towel Centerfeed; Ply - 2-Ply; Color - White; Sheet Size (WxL) - 8.25 x 11.8 (20.96 x 29.97 cm); Towels Per Roll - 610; Rolls Per Case - 6; Towels Per Case - 3,660; System Identifier - M2 System
 - Tork Advanced Centerfeed Towels offer one-at-a-time service, and reduces waste. High absorbency, means less towels used.

Catalog ID
 TOR121202

Tork Premium 520 Multipurpose Cloth Giant Roll



Tork Premium 520 Multipurpose Cloth Giant Roll; Ply - 1-Ply; Color - Grey; Base Sheet - Spunlace; Sheet Size (WxL) - 16.9 x 15.0 (42.93 x 38.10 cm); Wipers Per Roll - 950; Rolls Per Case - 1; Wipers Per Case - 950; System Identifier - W1 System
 - When nothing but the best will do, rely on Tork Premium 520 Multipurpose Cloth, the premier wipers. Rental rag replacement and less expensive

Catalog ID
 TOR520304A

Tork Elevation Hand Towel Centerfeed Pro Dispenser



Tork Elevation Hand Towel Centerfeed Pro Dispenser; Color - Black; Dispenser Dimensions - 14.39 x 9.42 x 8.95 (36.55 x 23.93 x 22.73 cm); Dispensers Per Case - 1; System Identifier - M2 System
 - The Tork Centerfeed Pro Dispensing Systems enable an easy, one-handed operation and controlled consumption with the enhanced pro feature.

Catalog ID
 TOR559028A

Tork Advanced ShopMax 450



Tork Advanced ShopMax 450, Giant Roll; Ply - 1-Ply; Color - Blue; Base Sheet - DRC; Sheet Size (WxL) - 11.1 x 12 (28.19 x 30.48 cm); Wipers Per Roll - 800; Rolls Per Case - 1; Wipers Per Case - 800; System Identifier - W1 System
 - Best All Purpose with cloth like softness.

Catalog ID
 TOR450304

Tork Advanced Wiper 440



Tork Advanced Wiper 440, Centerfeed; Ply - 4-Ply; Color - Blue; Base Sheet - Paper; Sheet Size (WxL) - 11 x 15.75 (27.94 x 40.01 cm); Wipers Per Roll - 375; Rolls Per Case - 2; Wipers Per Case - 750; System Identifier - W1 System, W2 System
 - High quality, unique hole structure provides optimum absorption of oil, grease and cutting fluids.

Catalog ID
 TOR13244101





Tork Performance Floor Stand Towel Dispenser



Tork Performance Floor Stand Towel Dispenser; Color - Red/Smoke; Dispenser Dimensions - 39.61 x 25.43 x 20.87 (100.61 x 64.59 x 53.01 cm); Dispensers Per Case - 1; System Identifier - W1 System
 - Tork Performance is a new generation of dispensers born to perform. All dispensers are optimised for Tork wipers and when combined they become the perfect performance tools.

Catalog ID
 TOR652028B

Tork Advanced Bath Tissue Jumbo Roll



Tork Advanced Bath Tissue Jumbo Roll, 2-Ply, 10 inch Dia.; Ply - 2-Ply; Color - White; Linear Feet Per Roll - 1,600 (487.68 mtr); Linear Feet Per Case - 9,600 (2,926.08 mtr); Rolls Per Case - 6; Dimensions InchesxFeet - 3.55 x 1,600 (9.02 cm x 487.68 mtr); System Identifier - T1 System
 - Tork Advanced jumbo bath tissue's high capacity provides fewer refills and reduces labor.

Catalog ID
 TOR12021502

Tork Performance Wall Mount Towel Dispenser



Tork Performance Wall Mount Towel Dispenser; Color - Red/Smoke; Dispenser Dimensions - 18.23 x 25.43 x 10.79 (46.30 x 64.59 x 27.41 cm); Dispensers Per Case - 1; System Identifier - W1 System
 - Tork Performance is a new generation of dispensers born to perform. All dispensers are optimised for Tork wipers and when combined they become the perfect performance tools.

Catalog ID
 TOR652128A

Tork Bath Tissue Jumbo Roll Twin Dispenser



Tork Bath Tissue Jumbo Roll Twin Dispenser; Color - Black; Dispenser Dimensions - 13 x 21.5 x 5.5 (33.02 x 54.61 x 13.97 cm); Dispensers Per Case - 4; System Identifier - T1 System
 - The Tork Jumbo Roll Twin Dispenser's large capacity dispenses up to ten times the capacity of conventional dispensers and reduces maintenance costs.

Catalog ID
 TOR247549A

Tork Advanced ShopMax™ 450



Tork Advanced ShopMax™ 450, Roll Towel; Ply - 1-Ply; Color - Blue/White; Base Sheet - DRC; Sheet Size (WxL) - 11 x 9.4 (27.94 x 23.88 cm); Wipers Per Roll - 60; Rolls Per Case - 30; Wipers Per Case - 1,800; System Identifier - Self Dispensing
 - Tork Advanced ShopMax™ 450 Roll Towel is strong enough to power through oil, grease and solvents, yet versatile enough to be an ideal everyday solution for general cleanup and spills.

Catalog ID
 TOR450360





Tork Elevation Liquid Soap Dispenser



Tork Elevation Liquid Soap Dispenser; Color - Black; Dispenser Dimensions - 11.5 x 4.4 x 4.5 (29.21 x 11.18 x 11.43 cm); Dispensers Per Case - 6; System Identifier - S1 System
 - The Tork Liquid Soap System is suitable for all kinds of washrooms – including tough and demanding environments.

Catalog ID
 TOR570028A

Tork Universal Hand Towel Singlefold



Tork Universal Hand Towel Singlefold; Ply - 1-Ply; Color - Natural; Open Size (WxL) - 10.25 x 9.125 (26.04 x 23.18 cm); Towels Per Package - 250; Packages Per Case - 16; Towels Per Case - 4,000; System Identifier - H22 System
 - Tork Universal soft and absorbent towels provide the right combination of quality, performance and value.

Catalog ID
 TORSK1850A

Tork Universal Hand Roll Towel



Tork Universal Hand Roll Towel; Features - Tork Universal Roll Towels are soft, strong, and highly absorbent offering the perfect combination of quality, performance, and value.; Ply - 1-Ply; Color - Natural; Rolls Per Case - 12; Dimension (Inches x Feet) - 7.87 x 600 (19.99 cm x 182.88 mtr); Linear Feet Per Roll - 600 (182.88 mtr); System Identifier - H21 System
 - Tork Universal Roll Towels are soft, strong, and highly absorbent offering the perfect combination of quality, performance, and value.

Catalog ID
 TORRK600E

Tork Premium Liquid Soap Antibacterial with 0.3% Triclosan



Tork Premium Liquid Soap Antibacterial with 0.3% Triclosan; Unit Size - 1 Liter; Color - Gold; Fragrance - Chamomile; Units Per Case - 6; System Identifier - S1 System
 - Tork Premium Antibacterial Liquid Soap is the classic antibacterial gold soap at a price your customers will love.

Catalog ID
 TOR400015SC

Tork Advanced ShopMax™ Wiper 450



Tork Advanced ShopMax™ Wiper 450, Centerfeed Refill; Ply - 1-Ply; Color - Blue; Base Sheet - DRC; Sheet Size (WxL) - 9.9 x 13.1 (25.15 x 33.27 cm); Wipers Per Roll - 200; Rolls Per Case - 2; Wipers Per Case - 400; System Identifier - W22 System
 - Best All Purpose with cloth like softness.

Catalog ID
 TOR450338



Can Dry - All Purpose Absorbent



- Can absorb up to its own weight in liquid including alcohols, coolants, oils, fuels, paints and solvents.
- Safe to use and handle, with no special equipment needed for disposal or collection.
- Not affected by temperature, will not rot or mold and is not WHMIS controlled.

Part #	Description
FLRCANDRY	Can Dry All Purpose Absorbent - 36lb Bag

Can Blast - Glass Abrasive



- Made from glass.
- Free from contaminants.
- Not harmful to the environment - can be land-filled and is safe to use near fish bearing water.
- Contains no crystalline silica, is not WHMIS controlled.
- Inert, nonflammable, non-corrosive, safe to use and re-useable.

Part #	Description
-	Can Blast 50lb Bag

Diamond Glacier - Ice Melt



- Contains Calcium Chloride, a safe and proven ingredient, to provide the perfect combination of speed and duration for ice melting.
- Contains Glacier Blue and Glacier Green soluble markers, environmentally friendly inert dyes, to show where the product has been applied in order to reduce over-application. This dye is water-soluble, UV sensitive and will leave no color residue.
- Will not harm vegetation, properly air-entrained concrete or pets, when used as directed.

Part #	Description
GLAW306	Diamond Glacier Supreme 44lb Bag

Oil Gator - Biocatalyst



- All natural biocatalyst for the control and remediation of hydrocarbons.
- Does not contain any man-made, cultured or genetically altered micro-organisms and is completely safe for the environment.
- Can absorb up to six times its weight in oil or oil based products and aids in ground cleaning by accelerating bioremediation.
- Can be used with fuel, oil, grease and volatile liquid spills as well as for land farming.

Part #	Description
-	Oil Gator 30lb Bag

MURRAY CHEMICAL INC. Sweeping Compound



The purpose of Sweeping Compound is to prevent dust from being raised and circulated into the air while sweeping floors, and also to pick up all of the fine dust and dirt leaving a clean floor.

**100 % ENVIRONMENTALLY SAFE
CONTAINS NO PETROLEUM OIL
USING 100 % CANOLA OIL
WASHED PLAYGROUND SAND**



Part #	Description
FLRSWP1	50 lb Box



Part #	Description
FLRSWP2	300 lb Drum